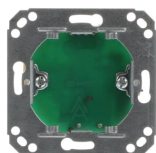




PRODUCT-DETAILS

EI 715 3

EI 715 3 Corridor databus terminator -passive-



General Information	
Extended Product Type	EI 715 3
Product ID	16097153
EAN	7400000001916
Catalog Description	EI 715 3 Corridor databus terminator -passive-
Long Description	EI 715 3 Corridor databus terminator -passive-

Technical	
Suitable For	2-wire
Power Supply Type	Bus System
Model Number	Corridor databus terminator
Application Function	Hospitality

Material Compliance	
RoHS Status	No declaration needed
REACH Declaration	No declaration needed
Conflict Minerals Reporting Template	9AKK108468A3363

(CMRT)

Dimensions

Product Net Width	65 mm
Product Net Height	50 mm
Product Net Depth / Length	30 mm
Product Net Weight	0.060 kg

Ordering

Package Level 1 Units	box 1 piece
Package Level 1 Gross Weight	0.080 kg

Certificates and Declarations

Declaration of Conformity - CE	No declaration needed
--------------------------------	-----------------------

Installation

Instructions and Manuals	No document needed
--------------------------	--------------------

Popular Downloads

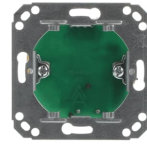
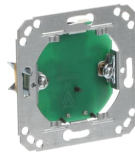
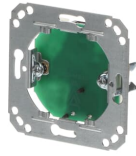
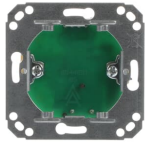
Data Sheet, Technical Information	No document needed
-----------------------------------	--------------------

Classifications

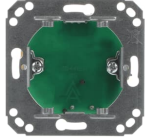
ETIM 8	EC002971 - System device clinic-installation
ETIM 9	EC002971 - System device clinic-installation
WEEE Category	5. Small Equipment (No External Dimension More Than 50 cm)
WEEE B2C / B2B	Business To Consumer
CN8	85319085

Categories

Low Voltage Products and Systems → Building and Home Automation Solutions → Hospital Solutions → Clinos



360°



360°